

Depot Systems Hosted Terminal Servers support a web access connection along with the normal Remote Desktop connections.

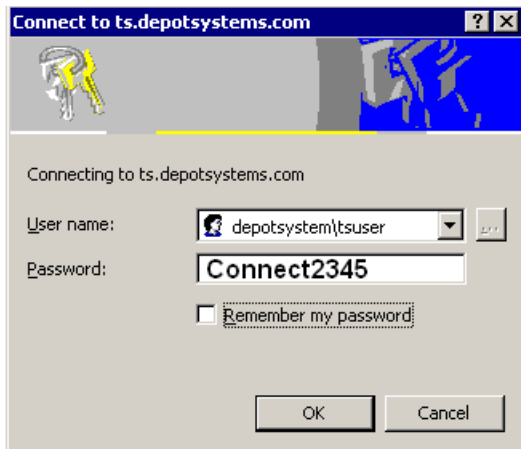
To use the web access method, follow the instructions below. Your web browser will need to allow Active X control objects to be installed.

### Using Depot System TS Web Access

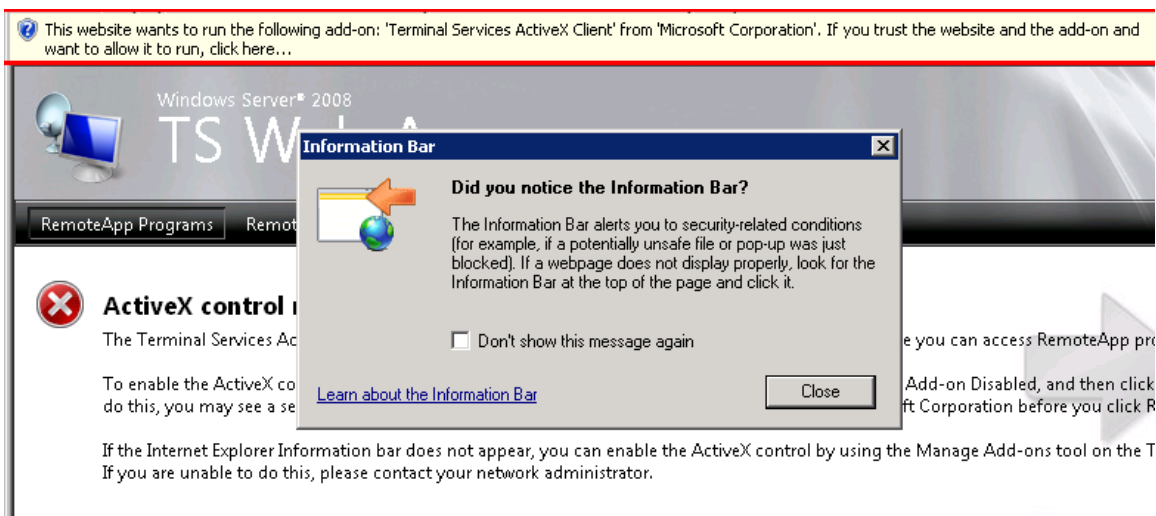
Go to [www.depotsystems.com](http://www.depotsystems.com) and click the Hosted Servers Link

Or go to <https://ts.depotsystems.com/ts>

Enter the following user ID and password to connect to the gateway.



If not installed, you will see the following to install the ActiveX control. Click Close, then right click on the yellow section, then click “Run Active X control”



This website wants to run the following add-on: 'Terminal Services ActiveX Client' from 'Microsoft Corporation'. If you trust the website and the add-on and want to allow it to run, click here...

Run ActiveX Control  
What's the Risk?  
More information

Windows Server® 2008  
TS Web Access

RemoteApp Programs Remote Desktop

**ActiveX control not enabled**  
The Terminal Services ActiveX Client control is not enabled. You must enable this ActiveX control before you can access RemoteApp pr  
To enable the ActiveX control, click the warning message on Internet Explorer Information bar, point to Add-on Disabled, and then click do this, you may see a security warning. Make sure that the publisher for the ActiveX control is Microsoft Corporation before you click F  
If the Internet Explorer Information bar does not appear, you can enable the ActiveX control by using the Manage Add-ons tool on the T  
If you are unable to do this, please contact your network administrator.

Click Run to install.

Internet Explorer - Security Warning

Do you want to run this ActiveX control?

Name: Terminal Services ActiveX Client  
Publisher: Microsoft Corporation

Run Don't Run

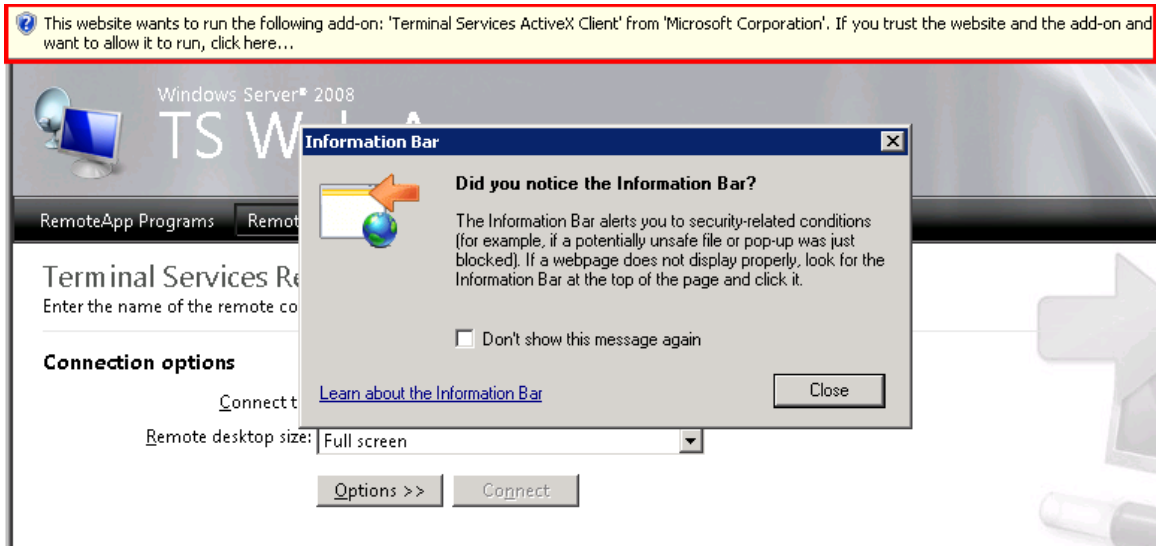
This ActiveX control was previously added to your computer when you installed another program, or when Windows was installed. You should only run it if you trust the publisher and the website requesting it. [What's the risk?](#)

Now you will see the TS Web Access screen, click the Remote Desktop choice.

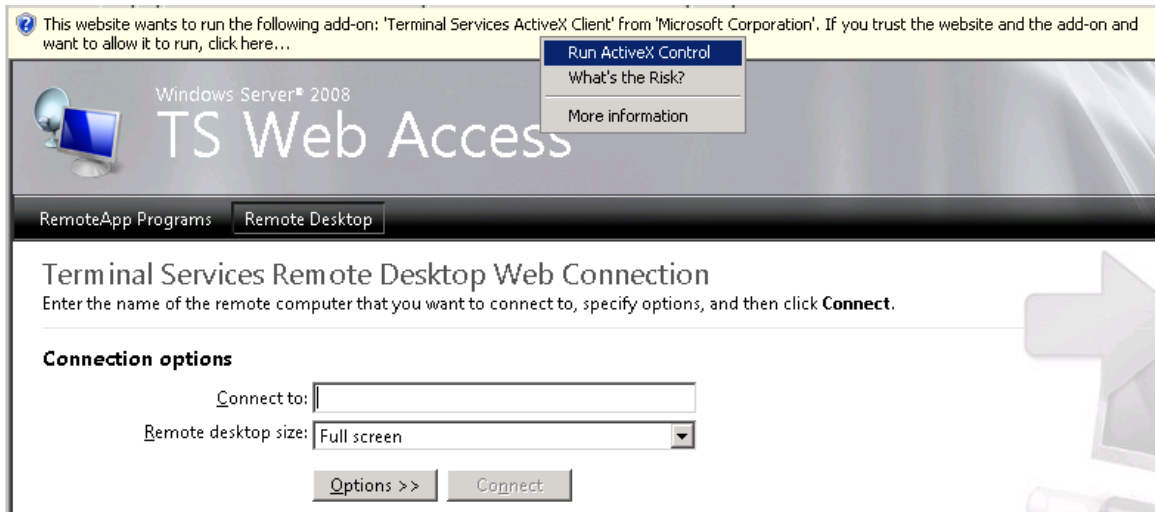
Windows Server® 2008  
TS Web Access

RemoteApp Programs Remote Desktop

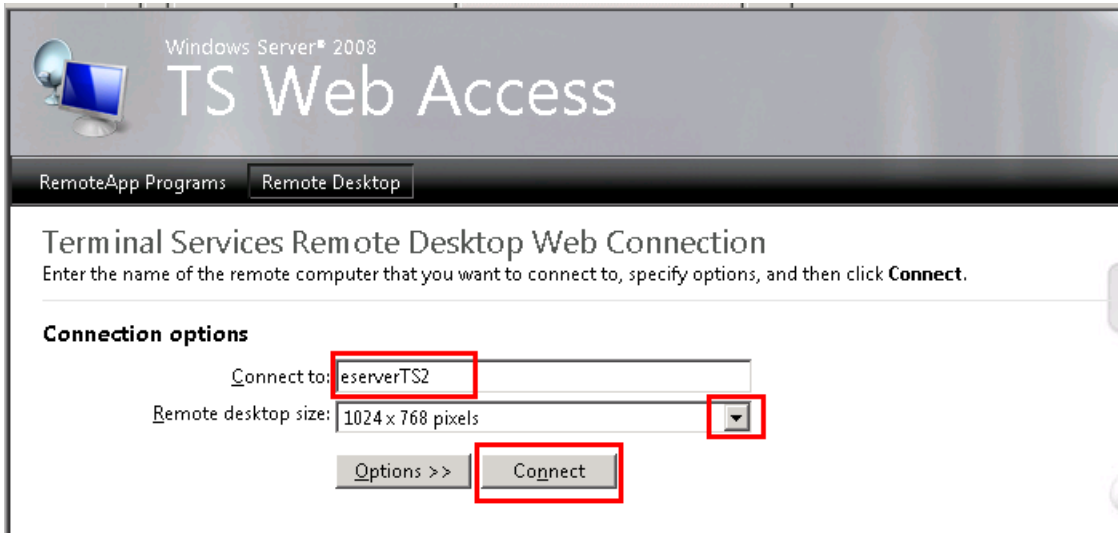
Right Click in the yellow section to install this second ActiveX control.



Run the Install



You are now connecting to the terminal server. Enter in eserverTS2. Change the screen size if needed. Click **Connect**.



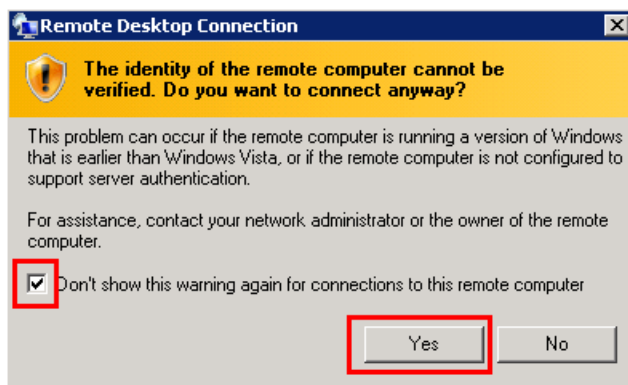
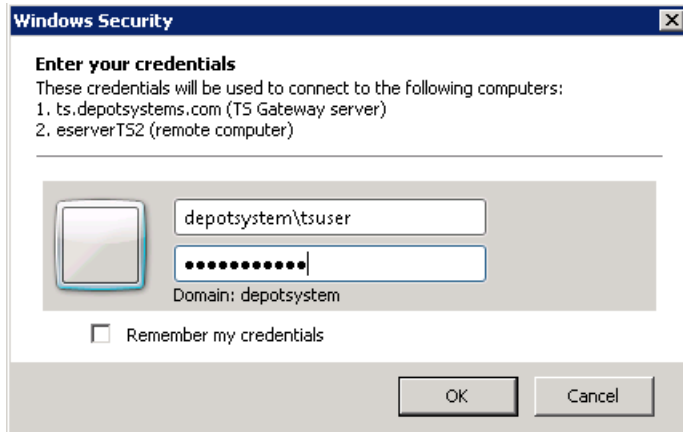
Click **Connect**



Enter the same depotsystem\tsuser as before.

User: depotsystem\tsuser

Password: Connect2345




Now you are at the terminal server. Enter your normal login ID and password.  
Change the Log on to: ESERVERTS2




Done

---



Windows Server® 2008  
TS Web Access

RemoteApp Programs   Remote Desktop

 **ActiveX control not installed or not enabled**

The Terminal Services ActiveX Client control is not available. Before you can access remote programs and connect to remote desktops, you must install and enable this ActiveX control.

If your computer does not have the correct version of the Terminal Services ActiveX Client control, you must download and install the correct version. For more information about this update and to download the installation package, visit [this website](#).

If you have already installed the correct update package, you must enable the ActiveX control. To do this, follow your system administrator's instructions and to run ActiveX controls. When you enable the ActiveX control, you may see a security warning. Before you continue, you must confirm that the ActiveX control is Microsoft Corporation.

After you install the package or enable the ActiveX control, you must refresh this Web page.

Please contact Depot System Support if you need help or have any questions.

Phone: 440-943-4378 Ext 1

Email: [support@depotsystems.com](mailto:support@depotsystems.com)