

Using Live Meeting to connect to support meeting

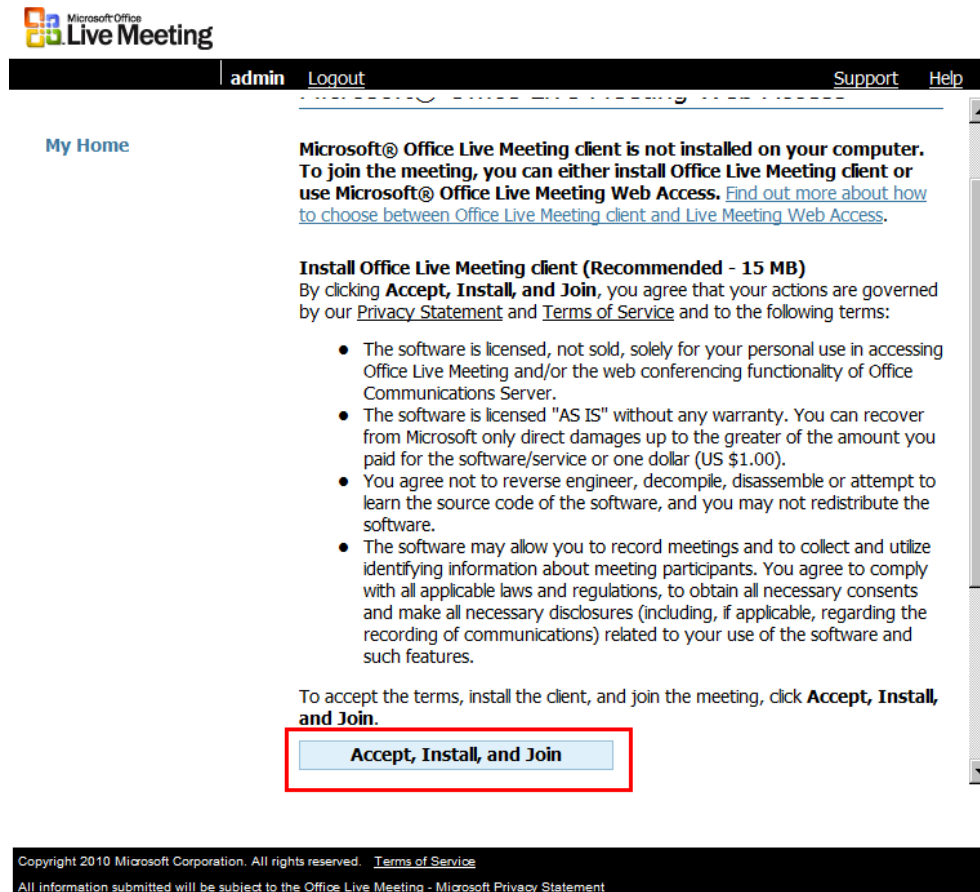
On the remote PC have the use go to www.depotsystem.com

Click Support. Then Software Support

Join a LiveMeeting

[Join a Live Meeting Support Session](#)

On the first usage, this install screen will appear. Click as shown to install.



Microsoft Office Live Meeting

admin Logout Support Help

My Home

Microsoft® Office Live Meeting client is not installed on your computer. To join the meeting, you can either install Office Live Meeting client or use Microsoft® Office Live Meeting Web Access. [Find out more about how to choose between Office Live Meeting client and Live Meeting Web Access.](#)

Install Office Live Meeting client (Recommended - 15 MB)
By clicking **Accept, Install, and Join**, you agree that your actions are governed by our [Privacy Statement](#) and [Terms of Service](#) and to the following terms:

- The software is licensed, not sold, solely for your personal use in accessing Office Live Meeting and/or the web conferencing functionality of Office Communications Server.
- The software is licensed "AS IS" without any warranty. You can recover from Microsoft only direct damages up to the greater of the amount you paid for the software/service or one dollar (US \$1.00).
- You agree not to reverse engineer, decompile, disassemble or attempt to learn the source code of the software, and you may not redistribute the software.
- The software may allow you to record meetings and to collect and utilize identifying information about meeting participants. You agree to comply with all applicable laws and regulations, to obtain all necessary consents and make all necessary disclosures (including, if applicable, regarding the recording of communications) related to your use of the software and such features.

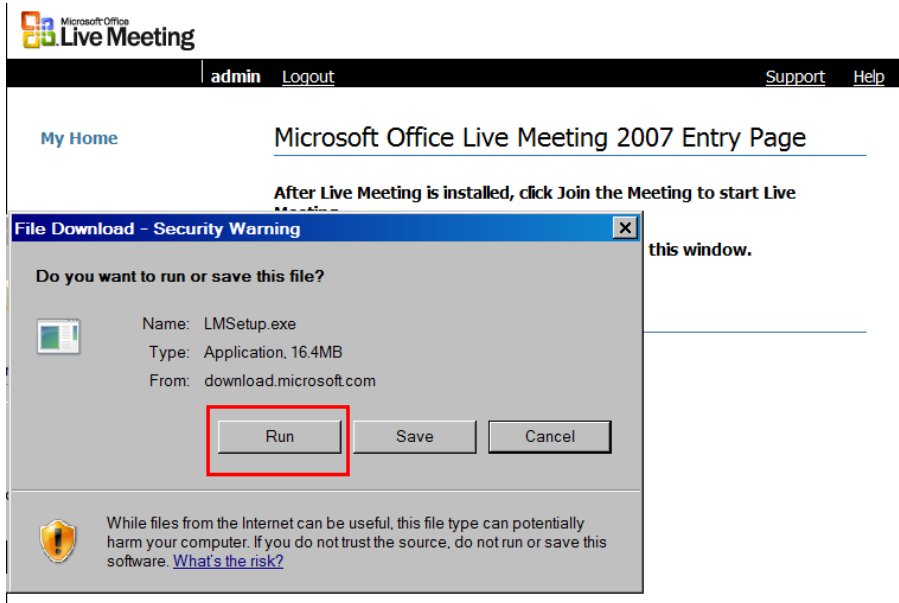
To accept the terms, install the client, and join the meeting, click **Accept, Install, and Join**.

Accept, Install, and Join

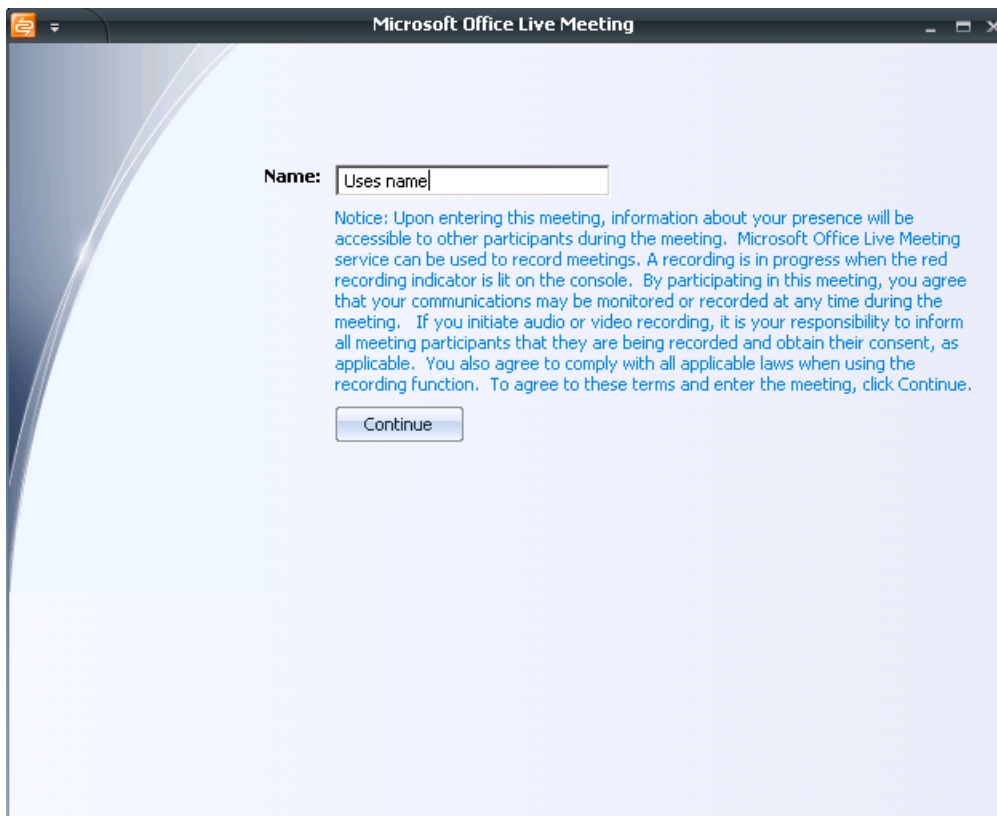
Copyright 2010 Microsoft Corporation. All rights reserved. [Terms of Service](#)
All information submitted will be subject to the Office Live Meeting - Microsoft [Privacy Statement](#)

Powered by
Microsoft Office Live Meeting

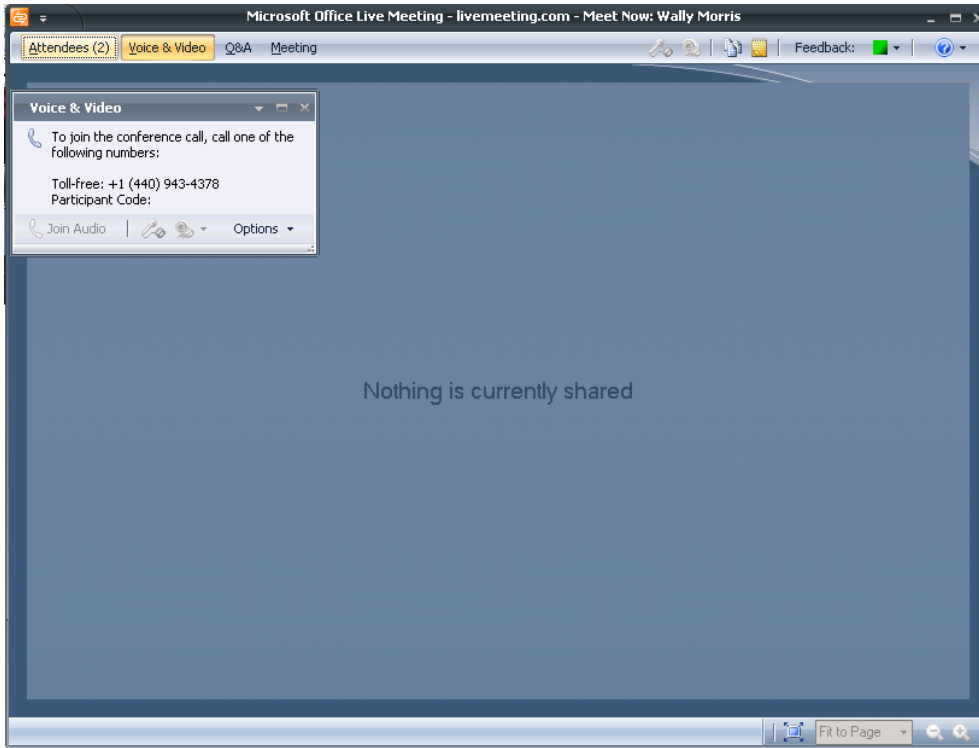
Click RUN to install



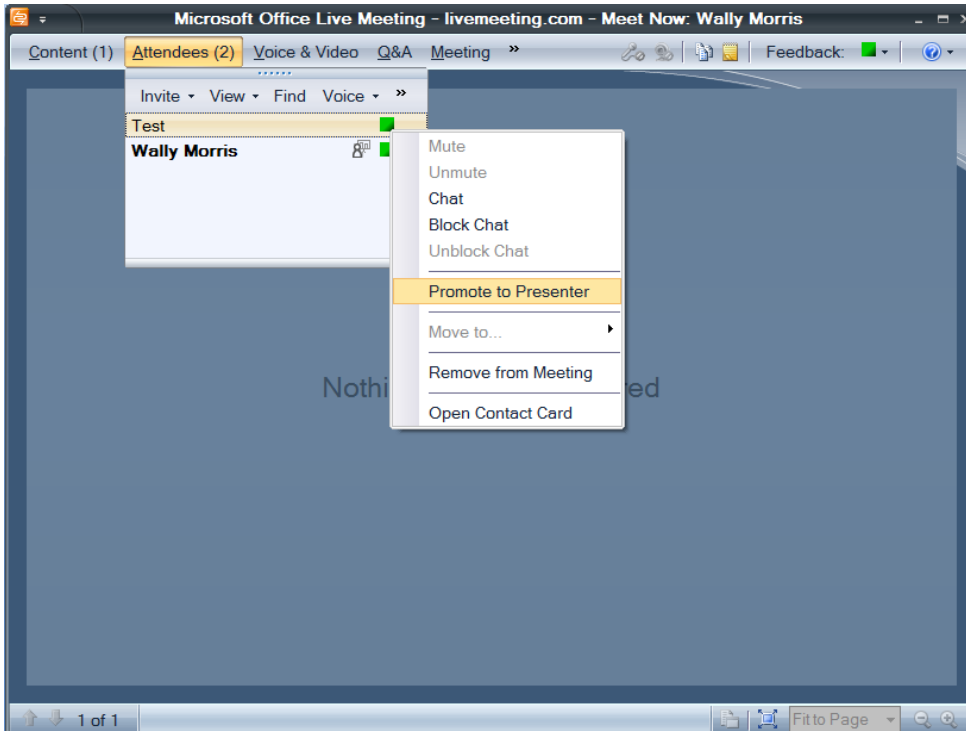
Enter in a user name for the meeting, you can use any name.



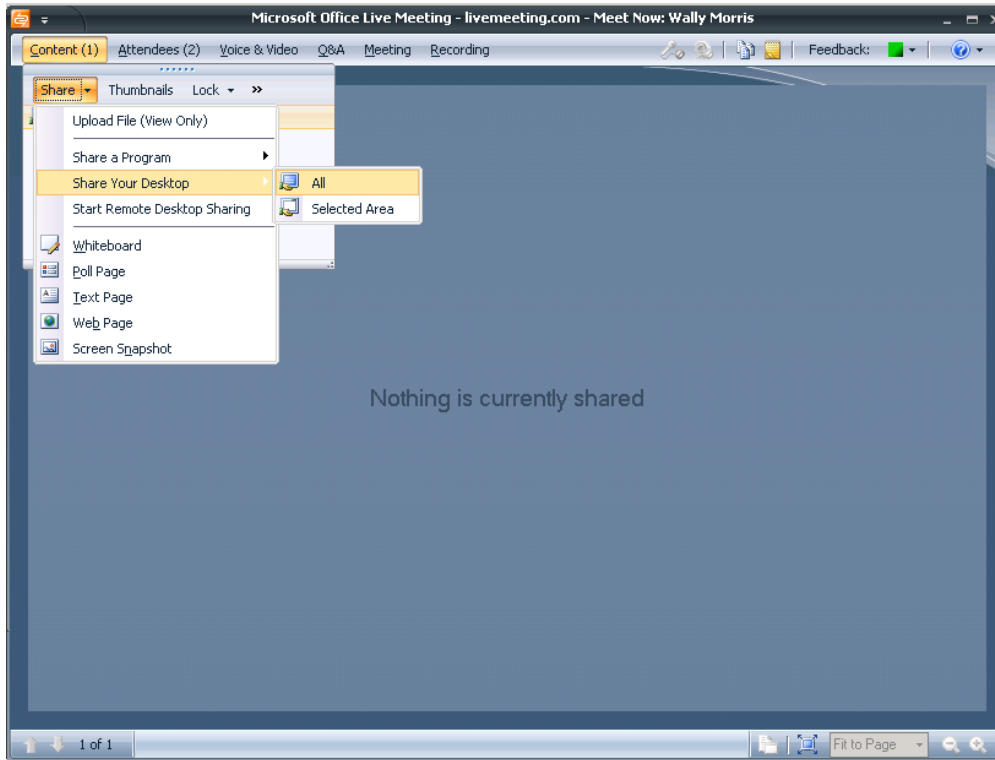
This is the main Live Meeting Console shown on the remote PC.



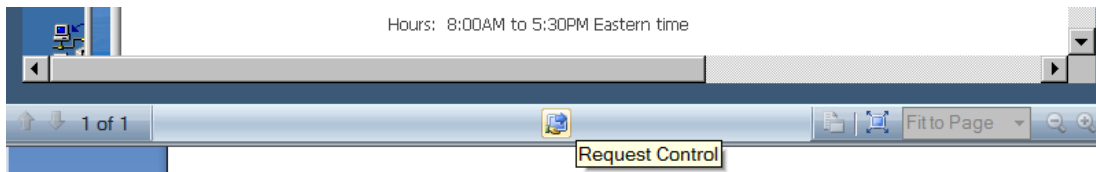
Now the admin will need to promote the user as a Presenter, **this is done on the ADMIN side.**



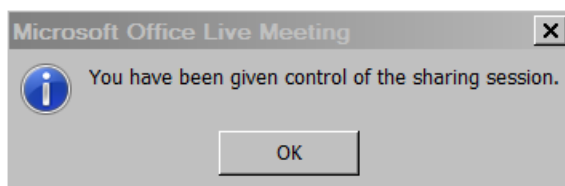
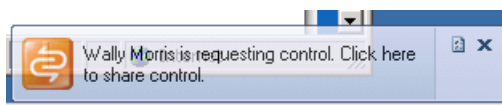
Now on the remote PC you will see the Content menu choice. Share your desktop.



Now the admin needs to request to control the PC. **This is done on the ADMIN side.**



The remote user will get this message, Click on this message to allow remote control



Done